

ANTHEM

INSECTICIDE GRANULE

Product Guide

SAND GRANULE FIPRONIL INSECTICIDE FOR PROBLEM PEST IN TURF CONTROL



PRODUCT DETAILS

Active Constituents:

0.5 g/kg Fipronil

Formulation type:

Sand Granule Insecticide

Insecticide Mode of Action:

For the control of Argentine Stem Weevil, Funnel Ants and Mole Crickets in recreational, domestic and commercial turf

Target Pests:

Argentine Stem Weevil, Funnel Ants and Mole Cricket

APVMA Registration Number:

82644/106341

DIRECTIONS FOR USE

SITUATION	PEST	RATE	CRITICAL COMMENTS
Recreational turf (including bowling greens, golf courses, parks and playing fields, domestic turf and commercial turf farms)	Argentine stem weevil (<i>Listronotus bonariensis</i>)	150 kg/ha	Distribute granules evenly on the turf/grass surface at the first signs of pest activity. Ensure incorporation with at least 6 mm of rainfall or overhead irrigation immediately after application. #Domestic turf: For use by authorised lawn-care specialists only.
	Funnel ant (<i>Aphaenogaster pythie</i>)	120 kg/ha	
	Mole cricket # (<i>Scapteriscus didactylus</i> and <i>Gryllotalpa</i> spp.)	60 kg/ha	

NOT TO BE USED FOR ANY PURPOSE, OR IN ANY MANNER, CONTRARY TO THIS LABEL UNLESS AUTHORISED UNDER AP-PROPRIATE LEGISLATION

EASY TO APPLY WITH LONGER EFFICACY

In Australian trials Anthem Insecticide Granules treatment significantly reduced funnel ant activity and the construction of anthills compared to non-repellent insecticide control, with significant reduction of funnel ant activity for 90 days after application. There was no visible phytotoxicity or adverse effects on the turf grass by any treatment in these trials. Anthem Insecticide Granules have been formulated to leave the longest possible residual using 0.5g/kg Fipronil. Rates of 150/120/60kg/ha have been formulated specifically using a coarse sand granule to benefit easy application.

ANTHEM UTILIZES A UNIQUE NONREPELLENT, OR “UNDETECTABLE,” CHEMICAL TECHNOLOGY, WHICH ANTS CAN’T SEE, SMELL, TASTE, OR AVOID



FUNNEL ANTS

Size: 1-5mm

Habitat: Turf and surrounding areas

Threat: Turf destruction, blunting of mower blades, uneven playing surfaces, ability to sting

Overview: The Funnel Ant, *Aphaenogaster* spp. are widespread throughout Australia. They can be found outdoors and favour open ground and turf. Areas such as sporting field, parks and golf courses are high impact areas. Putting surfaces and fairways can be affected causing uneven playing surfaces. The unsightly mounds of soil can cause damage to mower blades. Large areas of damaged turf are also evident after mowing. Funnel ants also have the ability to sting when protecting their territory.

MOLE CRICKETS

Size: 3-4cm

Habitat: Turf

Threat: Destruction of turf roots causing unsightly playing surfaces

Overview: 100 – 200 eggs are laid in a chamber in the soil. Eggs are laid in early spring and hatch soon after. Nymphs mature over summer causing maximum damage in late summer, early winter.

ARGENTINE STEM WEEVIL

Size: 3mm

Habitat: Turf

Threat: Destruction of stems and shoots causing unsightly playing surfaces

Overview: Larvae have a creamy yellow body and are about 5mm in length. They are found mainly in thatch. Argentine Stem Weevil have three generations per year. September and October spell the breeding season. Larvae emerge in 3-4 weeks and feed for 3-4 weeks before pupating. Months of concern are generally early November, January and late February.

FEATURES AND BENEFITS

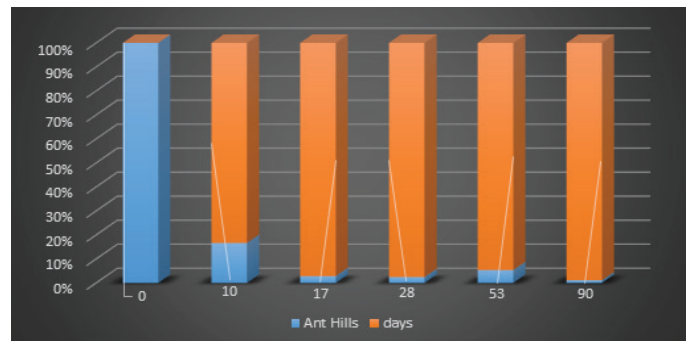
Outstanding efficacy on target pests - offers exceptional control and residual.

Long-term residual control - limits the number of pesticide applications.

Proven formulation - ideally suited for application to turf surfaces and turf machinery. Low S5 poison scheduling & low active ingredient output (60-150kg / ha) increased safety to users & public, very low environmental hazard.

Group 2B Insecticide

FUNNEL ANT CONTROL IN TURF OVER 90 DAYS



Funnel ant, nest destruction of lawn

