



Nothing hits the mark like Cislin

Cislin® 25 is premium quality deltamethrin suspension concentrate that can be used with complete confidence inside and out.

Cislin has been a proven performer in Australia's Professional Pest Management industry for over 30 years; now it is available in a more concentrated form, which allows more compact packaging and easier measuring.

With the same broad level of activity and residual performance, high level of safety and formulation quality second to none it can be used with complete confidence both inside and out.

Features

- + 2.5 times more concentrated than other available deltamethrin-based products
- + Water based suspension concentrate
- + Non-staining
- + Broad spectrum of activity
- + Excellent knockdown and residual activity
- + Registered for application to mattresses
- + Available in 1 L and 5 L pack sizes

Benefits

- + Reduced weight in vehicles and reduced use of packaging
- + No hydrocarbon solvents utilized resulting in low odour
- + Can be used with confidence on a range of surface types
- + Effective against a wide range of pests
- + Client satisfaction and reduced call-backs
- + Provides greater flexibility in bedbug management
- + Easier measuring and handling

Target Pests

Cockroaches, Ants, Spiders, Fleas, Bedbugs, Mosquitoes, Flies, Stored product pests, Bark beetle, Anobid and Bostrychid borers, Silverfish, Bird mites, Carpet beetle, Clothes moth

Areas of Use

Domestic, commercial, industrial and public buildings including food processing establishments, shops, factories, ships, offices, schools, storerooms, hospitals, barracks, private houses and external areas associated with such establishments.

Application rate and delivery

- > 7.5 -15 mg active substance/m² (equivalent to 50 mL of diluted product/m²).
- > Dilute 30-60 mL of concentrate in 5 -10 L water; this will cover approximately 100 m² of surface area, depending on porosity of surface treated.

envu™ Professional Pest Management

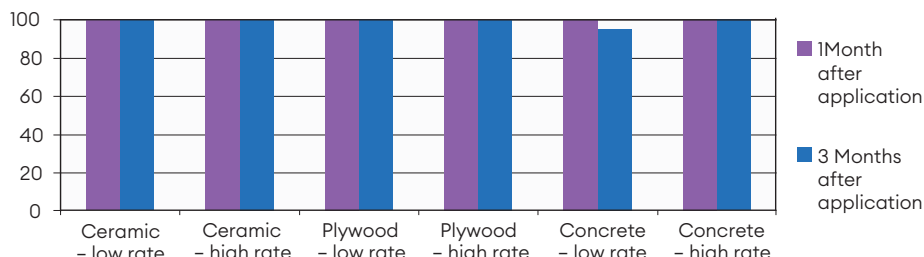
Nothing hits the mark like Cislin



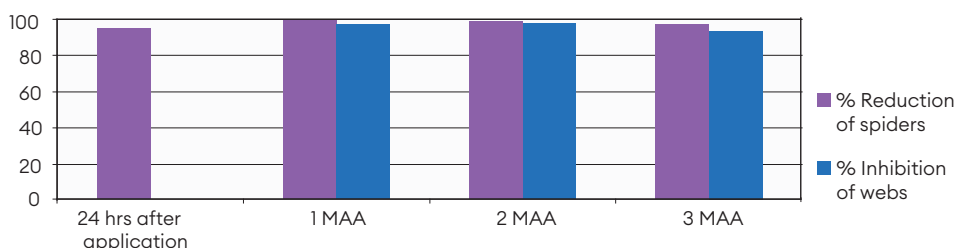
Comments on application

Cislin 25 contains a crystalline suspension of deltamethrin particles. Field and laboratory trials with Cislin demonstrate that commercially acceptable activity can be expected for at least several months, depending on the nature of the surface treated.

% Mortality of German cockroaches at one and three months after application of Cislin to various surfaces



Summary of results achieved with application of Cislin against web-spinning spiders, NSW, 1999



Best practice guidelines

- Conduct a thorough inspection prior to application of any chemical product.
- Read and follow directions on the label – there is information relating to specific pests which is intended to optimise control.
- Ensure spray tank is clean of residues of other formulations prior to use.
- Calibrate sprayer prior to application to ensure that target application rate is being achieved. For internal spraying a flat fan nozzle (eg. size 4001), producing a fine spray pattern is recommended. For external spraying use a medium to coarse flat-fan (eg. size 6502 or 6504) for even, flat surfaces or a variable-cone/cone-jet (eg. X3 or X8) for general situations.
- Avoid application to surfaces which are cleaned regularly or which are very dirty or greasy.
- Monitor pest activity after product is applied – if control is not achieved then other methods may need to be employed (i.e. Integrated Pest Management).
- Where a surface may be susceptible to damage or staining, consider alternative control methods, or it is recommended that a small inconspicuous area be treated (and allowed to dry) first.

Product Profile

Active Ingredient

25 g/L Deltamethrin

Insecticide group

Synthetic pyrethroid

Formulation type

Suspension concentrate

Pack sizes

Available in 1 L and 5 L pack sizes

Personal protective equipment: Cotton overalls buttoned to the neck and wrist, washable hat, elbow-length PVC gloves and face shield.

Regulatory information

APVMA Product Number: 62147

AQIS IOA Status: 14B

Poisons Schedule: Schedule 5 – Caution

Other regulatory information

Use of this product according to the registered label is consistent with the requirements of HACCP Procedures used within food processing establishments.

Impact on the Environment

All pesticides are regulated under the Agricultural and Veterinary Chemicals Act to ensure that they do not pose an unacceptable risk to human health and the environment. For information regarding pesticide regulatory process please visit the Australian Pesticides and Veterinary Medicines Authority website at www.apvma.gov.au



ALWAYS READ THE LABEL BEFORE USE

Cislin® is a trademark of 2022 Environmental Science AU Pty Ltd
Suite 2.06, Level 2, 737 Burwood Rd, Hawthorn East, VIC. 3123

Technical Enquiries: 1800 024 209 technicalsupport.australia@envu.com www.au.envu.com

Envu and the Envu logo are trademarks owned by Environmental Science U.S. LLC., or one of its affiliates © 2023 Environmental Science U.S. LLC.

Learn More →

