

▶ PEEL HERE ▶

## CAUTION

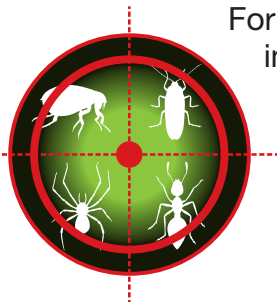
KEEP OUT OF REACH OF CHILDREN  
READ SAFETY DIRECTIONS BEFORE OPENING OR USING

*PEST CONTROLLERS OWN*

# *Deltamethrin + Tetramethrin 10SC Insecticide*

ACTIVE CONSTITUENTS: 10 g/L DELTAMETHRIN  
10g/L TETRAMETHRIN  
80g/L PIPERONYL BUTOXIDE

GROUP **3A** INSECTICIDE



For the control of a range of insect pests  
in various situations as per the  
Directions for Use Table.

**IMPORTANT: READ THIS LEAFLET  
BEFORE OPENING OR USING**

**PCO**  
*PEST CONTROLLERS OWN*

CONTENTS  
**5 Litres**

## DIRECTIONS FOR USE:

SITUATION	PEST	RATE	CRITICAL COMMENTS
<b>Houses, flats, factories, shops, warehouses, restaurants, hospitals, hotels, kitchens.</b>	Ants, Cockroaches, Fleas, Silverfish, Spiders	<b>Initial treatment</b> 150 mL <b>Maintenance treatments</b> 75 mL	On non-porous surfaces dilute with 5 L of water. On porous surfaces up to 10 L of water may be used. Apply to 100m <sup>2</sup> of surface, not exceeding the point of run-off. Apply to skirting boards, floors and carpets, cupboards, behind sinks, stoves and pipes paying particular attention to crack and crevices. Also apply to exposed areas where insects are seen and known hiding places.
	Bird Mites	75 mL	
	Carpet Beetles, Clothes Moths	<b>Initial treatment</b> 150 mL	Apply to infested areas of carpet, particularly around edges and under furniture.
	Bed Bugs	<b>Maintenance treatments</b> 75 mL	Treat cracks and crevices in bed frames and the adjacent walls.
	House Flies, Mosquitoes	75 mL	Apply to all exposed surfaces where flies and mosquitoes may rest.
<b>Freshly felled pine logs prior to debarking.</b>	Five-spined Bark Beetle ( <i>Ips gradicollis</i> )	100 mL	Dilute with 10 L of water and apply through knapsack or power sprayer at the rate of 10 L per 100m <sup>2</sup> of surface area.
<b>Freshly fells pine logs, poles, posts. Newly Sawn timber.</b>	Furniture Beetles ( <i>F. Anobiidae</i> ), Auder Beetles ( <i>F. Bostrychidae</i> ), Powder Post Beetles ( <i>F. Lyctidae</i> )		<b>Note:</b> For best results apply promptly after felling or sawing operations.

**NOT TO BE USED FOR ANY PURPOSE, OR IN ANY MANNER, CONTRARY TO THIS LABEL UNLESS AUTHORISED UNDER APPROPRIATE LEGISLATION.**

## GENERAL INSTRUCTIONS

### MIXING / APPLICATION

Invert original container before use. For best results, form a pre-mix of the required amount of product with an equal volume of water. Stir thoroughly. Add to spray tank and dilute with remaining amount of water. Agitate thoroughly.

DO NOT store diluted insecticide. Prepare a fresh solution as necessary. DO NOT spray the moving parts of any machinery, electric motors or switch gear with the water based product.

### PRECAUTION

#### General:

AVOID CONTACT WITH FOOD, FOOD UTENSILS OR PLACES ON WHICH FOOD IS PREPARED OR STORED.

**Before use:** Remove or cover all exposed foodstuffs. Cover all dishes and utensils, and places where food is prepared or stored.

**After use:** Thoroughly ventilate treated area. Clean up thoroughly before processing/ serving resumes. For surface treatment only-do not spray into the atmosphere using foggers or other devices designed to create an aerosol. Allow treated carpets to dry before resuming activity on them.

### INSECTICIDE RESISTANCE WARNING

For insecticide resistance management, Pest Controllers Own Deltamethrin + Tetramethrin 10SC Insecticide is a Group 3A Insecticide.

**GROUP 3A INSECTICIDE**

Some naturally occurring insect biotypes resistant to Pest Controllers Own Deltamethrin + Tetramethrin 10SC Insecticide may exist through normal genetic variability in any insect population. The resistant individuals can eventually dominate the insect population if Pest Controllers Own Deltamethrin + Tetramethrin 10SC Insecticide or other Group 3A insecticides are used repeatedly. The effectiveness of Pest Controllers Own Deltamethrin + Tetramethrin 10SC Insecticide on resistant individuals could be significantly reduced. Since occurrence of resistant individuals is difficult to detect prior to use, Amgrow Pty Ltd accepts no liability for any losses that may result from the failure of Pest Controllers Own Deltamethrin + Tetramethrin 10SC Insecticide to control resistant insects. For information about strategies for managing insecticide resistance contact your local supplier or Amgrow Pty Ltd.

### PROTECTION OF THE WILDLIFE, FISH, CRUSTACEANS AND ENVIRONMENT

Dangerous to fish. DO NOT contaminate streams, rivers or waterways with the chemical or used containers.

### STORAGE AND DISPOSAL

Store in closed, original container in a cool, well-ventilated area. DO NOT store for prolonged periods in direct sunlight. Triple or preferably pressure rinse containers before disposal. Add rinsings to spray tank. DO NOT dispose of undiluted chemicals on-site. If recycling, replace cap and return clean containers to recycler or designated collection point. If not recycling, break, crush or puncture and bury empty containers in a local authority landfill. If no landfill available, bury the containers below 500 mm in a disposal pit specifically marked and set up for this purpose clear of waterways, desirable vegetation and tree roots. Empty containers and product should not be burnt.

## **PRECAUTION – RE-HANDLING**

Allow spray to dry thoroughly, before handling materials (eg. sawn logs) that have been treated with Pest Controllers Own Deltamethrin + Tetramethrin 10SC Insecticide. If prior handling is necessary wear chemical resistant gloves. Gloves must be washed after each day's use.

## **SAFETY DIRECTIONS**

Harmful if swallowed. Facial skin contact may cause temporary facial numbness. Will irritate eyes and skin. Avoid contact with eyes and skin. When opening the container, preparing spray and using prepared spray wear cotton overalls buttoned to the neck and wrist, washable hat, elbow length PVC gloves and face shield. If product on skin, immediately wash area with soap and water. If in eyes, wash immediately with water. After use and before eating, drinking or smoking, wash hands, arms and face thoroughly with soap and water. After each day's wash gloves, face shield and contaminated clothing.

## **FIRST AID**

If poisoning occurs, contact a doctor or Poisons Information Centre. Phone Australia on 131126.

## **MATERIAL SAFETY DATA SHEET**

Additional information is listed in the Material Safety Data Sheet (MSDS) which can be obtained from the supplier.

## **CONDITIONS OF SALE**

Amgrow Pty Ltd shall not be liable for any loss injury damage or death whether consequential or otherwise whatsoever or howsoever arising whether through negligence or otherwise in connection with the sale supply use or application of this product. The supply of this product is on the express condition that the purchaser does not rely on Amgrow's skill or judgement in purchasing or using the same and every person dealing with this product does so at his own risk absolutely. No representative of Amgrow has any authority to add to or alter these conditions.

APVMA Approval No.: 68900/59336



### **Manufactured by:**

Amgrow Pty Ltd ABN 81 100 684 786  
Unit B2A, 3-29 Birnie Avenue, Lidcombe NSW 2141  
TELEPHONE: 1800 631 008



# CAUTION

KEEP OUT OF REACH OF CHILDREN  
READ SAFETY DIRECTIONS BEFORE OPENING OR USING

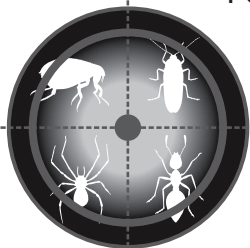
*PEST CONTROLLERS OWN*

# *Deltamethrin + Tetramethrin 10SC Insecticide*

ACTIVE CONSTITUENTS: 10 g/L DELTAMETHRIN  
10g/L TETRAMETHRIN  
80g/L PIPERONYL BUTOXIDE

GROUP **3A** INSECTICIDE

For the control of a range of insect pests  
in various situations as per the  
Directions for Use Table.



**IMPORTANT: READ THE ATTACHED  
LEAFLET BEFORE OPENING  
OR USING**

**PCO**  
*PEST CONTROLLERS OWN*

CONTENTS  
**5 Litres**

GLUE AREA

GLUE AREA



PEST CONTROLLERS OWN  
**Deltamethrin +  
Tetramethrin 10SC Insecticide**

#### STORAGE AND DISPOSAL

Store in closed, original container in a cool, well-ventilated area. DO NOT store for prolonged periods in direct sunlight. Triple or preferably pressure rinse containers before disposal. Add rinsings to spray tank. DO NOT dispose of undiluted chemicals on-site. If recycling, replace cap and return clean containers to recycler or designated collection point. If not recycling, break, crush or puncture and bury empty containers in a local authority landfill. If no landfill available, bury the containers below 500 mm in a disposal pit specifically marked and set up for this purpose clear of waterways, desirable vegetation and tree roots. Empty containers and product should not be burnt.

#### PRECAUTION – RE-HANDLING

Allow spray to dry thoroughly, before handling materials (eg. sawn logs) that have been treated with Pest Controllers Own Deltamethrin + Tetramethrin 10SC Insecticide. If prior handling is necessary wear chemical resistant gloves. Gloves must be washed after each day's use.

#### SAFETY DIRECTIONS

Harmful if swallowed. Facial skin contact may cause temporary facial numbness. Will irritate eyes and skin. Avoid contact with eyes and skin. When opening the container, preparing spray and using prepared spray wear cotton overalls buttoned to the neck and wrist, washable hat, elbow length PVC gloves and face shield. If product on skin, immediately wash area with soap and water. If in eyes, wash immediately with water. After use and before eating, drinking or smoking, wash hands, arms and face thoroughly with soap and water. After each day's wash gloves, face shield and contaminated clothing.

#### FIRST AID

If poisoning occurs, contact a doctor or Poisons Information Centre. Phone Australia on 131126.

#### MATERIAL SAFETY DATA SHEET

Additional information is listed in the Material Safety Data Sheet (MSDS) which can be obtained from the supplier.

#### CONDITIONS OF SALE

Amgrow Pty Ltd shall not be liable for any loss injury damage or death whether consequential or otherwise whatsoever or howsoever arising whether through negligence or otherwise in connection with the sale supply use or application of this product. The supply of this product is on the express condition that the purchaser does not rely on Amgrow's skill or judgement in purchasing or using the same and every person dealing with this product does so at his own risk absolutely. No representative of Amgrow has any authority to add to or alter these conditions.

APVMA Approval No.: 68900/59336

**PCO**  
PEST CONTROLLERS OWN

#### Manufactured by:

Amgrow Pty Ltd ABN 81 100 684 786  
Unit B2A, 3-29 Birnie Avenue, Lidcombe NSW  
2141 TELEPHONE: 1800 631 008

**Amgrow**

**IN A TRANSPORT  
EMERGENCY DIAL 000  
• POLICE OR FIRE  
BRIGADE •**



Batch Number

Date of

Manufacture