

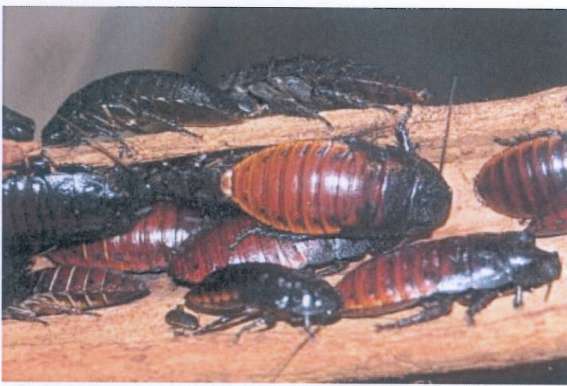


INNOVATIVE and AUSTRALIAN

SCUTTLE COCKROACH GEL

SCUTTLE COCKROACH GEL

Contains HYDAMETHYLON



A potent cockroach gel that can be used in sensitive areas.

APPLICATION:

SCUTTLE COCKROACH GEL can be used as a bait targeting cockroaches in or near their harborages. When applied to areas that cockroaches pass through they consume the bait. The active, hydramethylnon, affects the metabolic system killing cockroaches within 24- 48 hours. This feature of the product means that cockroaches don't die immediately. They return to harborages where other cockroaches will also ingest SCUTTLE COCKROACH GEL by feeding on their dead bodies and faeces.

BENEFITS

- **Efficacy:** Cockroaches readily eat the gel - many small doses mean quicker kill and higher mortality.

- **Long Lasting:** SCUTTLE COCKROACH GEL is a stable formulation. It will remain palatable until eaten.
- **Safety:** SCUTTLE COCKROACH GEL has low toxicity to mammals. It can easily be placed out of reach of children and pets.



STRATEGIES FOR COCKROACH CONTROL

- Search for places that cockroaches hide - cracks and crevices near food and water
- Find their trails- the same paths are used repeatedly
- Ensure other food sources are kept to a minimum
- Apply as many bait points as possible of SCUTTLE COCKROACH GEL specifically to those points
- Check incoming items for cockroaches
- Educate your clients on the importance of inspection and good hygiene.

PACK SIZE:

Available in 90g.



www.barmac.com.au

For more information about SCUTTLE COCKROACH GEL or other BARMAC products visit www.barmac.com.au or one of our distributors.
Barmac Industries Pty Ltd Swanbank Australia

Scuttle Roach Gel. B0707 V1

DIRECTIONS FOR USE:

RESTRAINTS

- DO NOT place baits in areas that are regularly washed as this will remove bait.
- DO NOT use in areas accessible to children and pets
- DO NOT use near open food and food contact surfaces
- DO NOT use this product on or around electrical equipment due to the possibility of electrical shock
- DO NOT apply gel to areas which have been recently sprayed with insecticides, or spray insecticides over gel placements, as this may cause the gel to become repellent
- DO NOT apply to surfaces where the temperature exceeds 54° C

Application Rate is dependent on level of infestation and species to be controlled.

COCKROACH SPECIES	APPLICATION RATE (g/m² infested surface area)	APPLICATION METHOD	CRITICAL COMMENTS
German	0.25 – 0.50	Small Spots	Use the lower application rate for low to moderate
Large, such as Australian, American, Smoky brown or Oriental	0.5 – 1.0	Large Spots	infestations and the higher rate for more severe infestations