

KNOCK 'EM DOWN DOWN KEEP 'EM DOWN DOWN



Fury 120 SC is specifically formulated to create a superior, longer lasting strength general insecticide that works in two powerful ways to rid your clients of general household pests.

Fury's power and strength comes from a patent protected (60475), optimized formula of alpha-cypermethrin and bifenthrin. Alpha-cypermethrin provides Fury's superior knock down power whilst the established strength of bifenthrin ensures a longer residual control period.

Product Description

Fury 120 SC is a water based suspension concentrate (SC) formulation containing two well known synthetic pyrethroids; bifenthrin (80g/L) and alpha-cypermethrin (40 g/L).

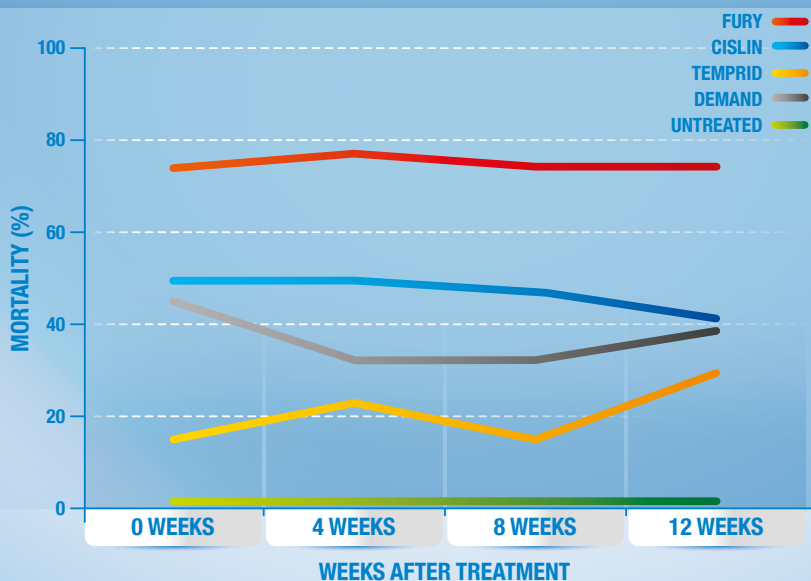


Overall Fury Has Superior Wide Spectrum Control

Summary Results Reference Trials: Agrisearch 2010/2013 - Fury 12.5ml/L, Cislin 6ml/L, Temprid 10ml/L, Demand 16ml/L

SUPERIOR WIDE SPECTRUM CONTROL

Summary Result: Average Control After 30 mins For Ants and Cockroaches, and 24hrs For Spiders On Plywood



The Dual Power Of Fury!

- Rapid Knock Down
- Longer Residual
- Broad Pest Spectrum
- Two Active Ingredients
- Eliminate Call Backs
- Unsurpassed Customer Satisfaction
- Powerful
- Extremely Effective

Cislin® and Temprid® are registered trademarks of Bayer Environmental Sciences. Demand® is a registered trademark of Syngenta Group Company.

FMC Australasia Pty Ltd

Call 1800 066 355

www.fmcaustralasia.com.au



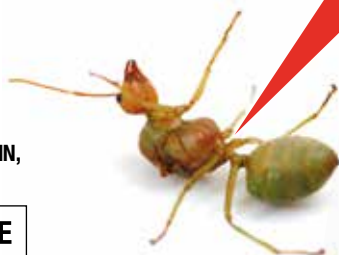
Leaders in Pest Management Solutions

Fury

120 SC
General Household
Insecticide

**ACTIVE CONSTITUENT: 80 g/L BIFENTHRIN,
40 g/L ALPHA-CYPERMETHRIN**

GROUP 3A INSECTICIDE



Directions of Use

SITUATION	PESTS	RATE
Internal and external areas of Domestic, Commercial, Public and Industrial buildings and Structures	Ants (excluding red imported fire ants)	Initial treatment 125 mL/10 L Maintenance treatment 75 mL/10 L
	Cockroaches	Initial treatment 150 mL/10 L Maintenance treatment 100 mL/10 L
	Flies & Mosquitoes	Initial treatment 125 mL/10 L Maintenance treatment 75 mL/10 L
	Biting midges	Initial treatment 125 mL/10 L Maintenance treatment 60 mL/10 L
	Silverfish	Initial treatment 150 - 250 mL/10 L Maintenance treatment 75 - 125 mL/10 L
	Fleas	75 mL to 125 mL/10 L
	Clothes moths	25 to 50 mL/10 L
	Papernest Wasp	75 mL/10 L
	Bed bugs	75 mL/10 L
	Spiders	Initial treatment 125 mL/10 L Maintenance treatment 75 mL/10 L

CRITICAL COMMENTS
<p>To control ants and cockroaches:</p> <p>Apply as a coarse low pressure spray to ensure thorough coverage of surfaces where pests hide, frequent & rest. Spray to the point of run-off, but do not exceed "the point of runoff". As a guide Use approximately 5 L per 100 m², for non-absorptive surfaces, and 10 L per 100 m², for absorptive surfaces.</p>
<p>To control Biting midges, flies and mosquitoes:</p> <p>Apply to indoor and outdoor surfaces, as a coarse low pressure spray, ensuring good coverage and wetting of all surfaces. Treat all areas where insects rest or harbour. Use the higher rate where pest pressure is severe and where rapid knockdown and/or residual protection is desired and use the lower rate for maintenance applications. Use 5 L per 100 m² for non-absorptive surfaces and 10 L of per 100 m² for absorptive surfaces.</p>
<p>Silverfish: Remove all infested and non-infested material, including books, paper and/or clothing from shelves or storage spaces before treatment. Clean or treat all affected material and storage sites, before repacking/ storing.</p>
<p>Fleas: Before application remove pets, companion animals, fish and their feeding bowls etc., and thoroughly vacuum all indoor areas including furniture and fittings to gain maximum access to flea harbourage. Use higher rate for rapid knockdown and maximum residual protection. Treat reinfestation as necessary.</p>
<p>Clothes moths rest and harbour in dark, undisturbed areas, such as under carpets, under furniture and in cupboards, chests and closets where clothing and other materials have been stored undisturbed for long periods. Remove clothing and other items from these areas and clean or vacuum before treating. Removed items should be inspected and where necessary cleaned and/or treated before being returned to storage.</p>
<p>Papernest wasps: Apply the prepared emulsion directly to the nest, ensuring thorough coverage to the point-of-runoff. When all adult wasps have been knocked down, the nest may be safely removed from the structure.</p>
<p>Pest Managers should familiarise themselves with the bedbug CODE of PRACTICE.</p>
<p>Apply to areas where spiders hide, frequent and rest. Spray to the point of run-off using approximately 5 L of spray mixture per 100 m².</p>

FMC Australasia Pty Ltd

Call 1800 066 355

www.fmcaustralasia.com.au



Leaders in Pest Management Solutions